

TYPE

# A

## 1 ½ STOREY DETACHED FACTORY

(approx. 1 acre - 2 acres)

Land Area :  
approx. 43,777.00 sq.ft. - 100,935.00 sq.ft.

Gross Floor Area :  
approx. 30,273.86 sq.ft. & above



Artist's Impression Only

<b>FACTORY HEIGHT</b>	: 9m
<b>FLOOR DESIGN LOADS</b>	
Production Area (Ground Floor)	: 20kN/m <sup>2</sup> , Non-Suspended Floor Slab
Office Area (Mezzanine Floor)	: 2.5kN/m <sup>2</sup>
<b>ROOF DESIGN LOADS</b>	
Production Area Roof	: Imposed dead load= 0.25 kN/m <sup>2</sup> (Load of Rafter, Purlin, Metal Roofing Sheet, Insulation, Lighting Fitting, Sprinkler Pipe) Live load= 0.25 kN/m <sup>2</sup>
<b>ROOF SYSTEMS</b>	
Roof Structure	: Structural Steel designed to BS 5950 Standard
Roof Sheets	: Metal Roof or equivalent c/w insulation
Gutter	: Stainless Steel Gutter
<b>WALLS</b>	
Internal Wall (Office and Production Area)	: 115mm thick common brick wall with plaster and painted with emulsion paint. Matt finishes tiles to toilets (2.9m)
External Wall (Office Area)	: 115mm thick common brick wall with plaster and painted with weather resistant paint.
External Wall (Production Area)	: 2.1m high wall with metal cladding and translucent sheet above
<b>FLOORS</b>	
Ground floor	: 150mm G30 concrete with a layer of polythene sheet and BRC A7 or steel fibre
Production Finishes	: 4kg/m <sup>2</sup> floor hardener finishes
Lobby & Lobby Staircase Finishes	: Matt finishes tiles or equivalent standard
Office Finishes	: Cement Render
Toilet Floor Finishes	: Matt finishes tiles
<b>DOORS</b>	
External Doors	: Motorized Roller Shutters and Mild Steel Doors (Production Area) : Tempered laminated glass door (Entrance Area)
Internal Doors	: Fire-rated Door (Based on local authority requirement) and Timber Flush Door (Office Area)
<b>WINDOWS</b>	
External Windows	: Aluminium Frame Top Hung and Fixed Glass Window (Production Area) : Reflective Glass Curtain Wall (Office Area) : Aluminium Framed Top Hung Windows (Office Area)

<b>CEILING</b>	
Office Area	: Gypsum Pin Hole False Ceiling (Office Area) : Gypsum Board Plaster Ceiling (Lobby Area)
Production Area	: Exposed Steel Structure (No Ceiling)
<b>INFRASTRUCTURE WORKS</b>	
External Road	: Reinforced Concrete Road c/w road marking
Fencing	: Front Signage : Common Brick Wall with c/w plaster cement and painted with weather resistant paint : Perimeter : 250mm Low Wall with 1800mm High BSP Fencing
Gate	: Sliding Gate Without Motor : Power Point for Motor Provided
Drainage System	: Concealed Pipe Culvert Drain
Sewerage System	: Vitrified clay pipe (VCP) connect to main sewerage line
Refuse Room	: 1 no.
Recycle Room	: 1 no.
Guard House	: 1 no.
Sprinkler Tank & Plinth	: Yes
TNB Sub-station	: Subject to appropriate authority requirement
Dock Leveller	: 2 nos.

<b>STANDARD MECHANICAL &amp; ELECTRICAL SPECIFICATION</b>	
MSB 1250A	: Setting 800A
DB 150A	: Yes
DB 60A	: Yes
DB 30A	: Yes
Lighting Point	: Yes
13A S/S/O	: Yes
15A Air-Cond Power Point	: Yes
Emergency Light	: Subject to appropriate authority requirement
Keluar' sign	: Subject to appropriate authority requirement
Telephone point	: Yes
Data Point	: Yes
30A Isolator Point	: Yes

<b>FIRE PROTECTION SYSTEMS</b>	
Fire Alarm System	: Yes
Hosereel System	: Yes
Automatic Sprinkler System (Ordinary Hazard)	: Yes
Portable Fire Extinguisher	: Yes
Direct Link to Fire Bridgate	: Yes
Hydrant System	: Yes

<b>PLUMBING &amp; WATER RETICULATION SYSTEMS</b>	
Water Tank for Toilet only	: Yes
Incoming Domestic Piping and Discharged Piping	: Yes

# TYPE A

## 1 1/2 STOREY DETACHED FACTORY

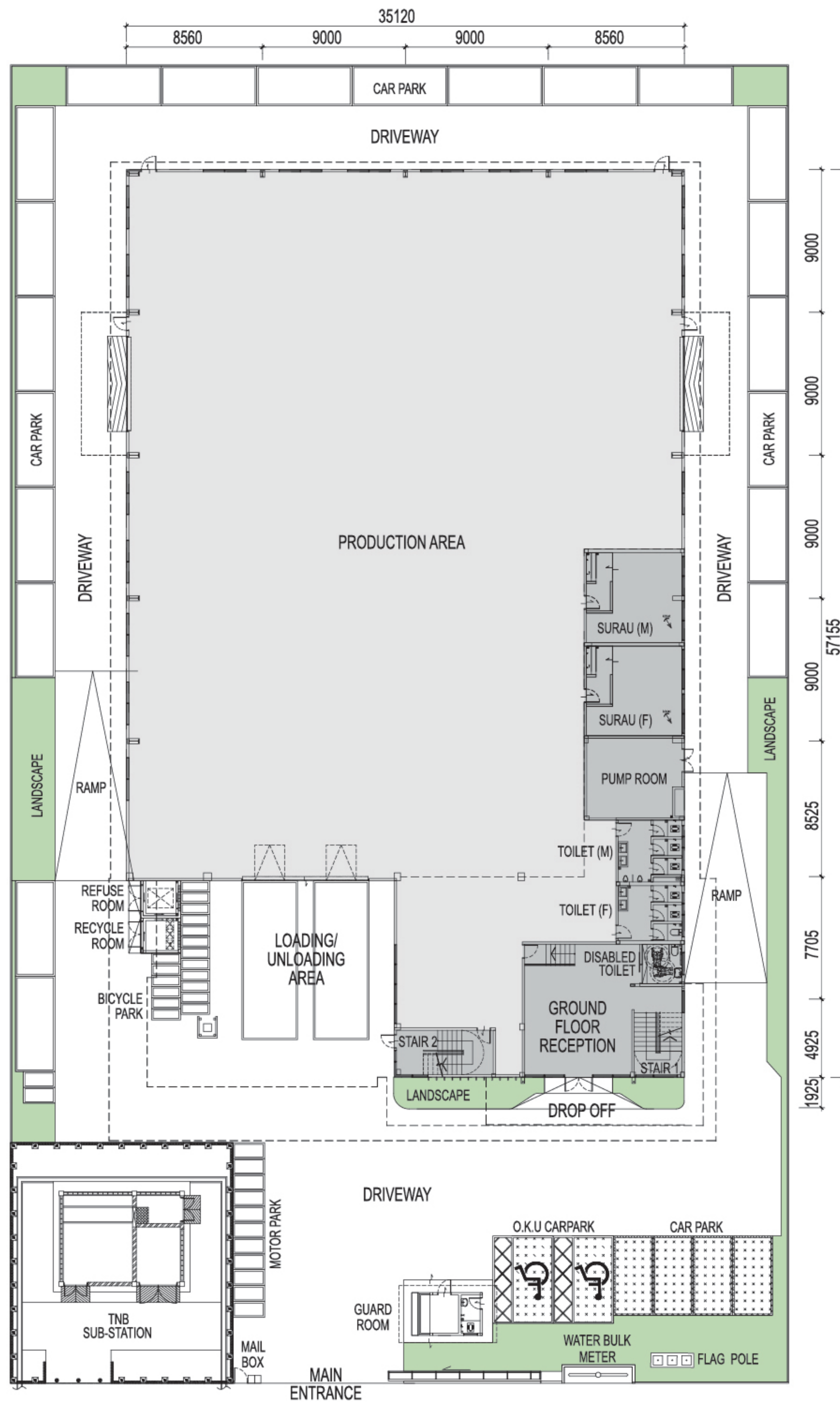
(approx. 1 acre - 2 acres)

Land Area :

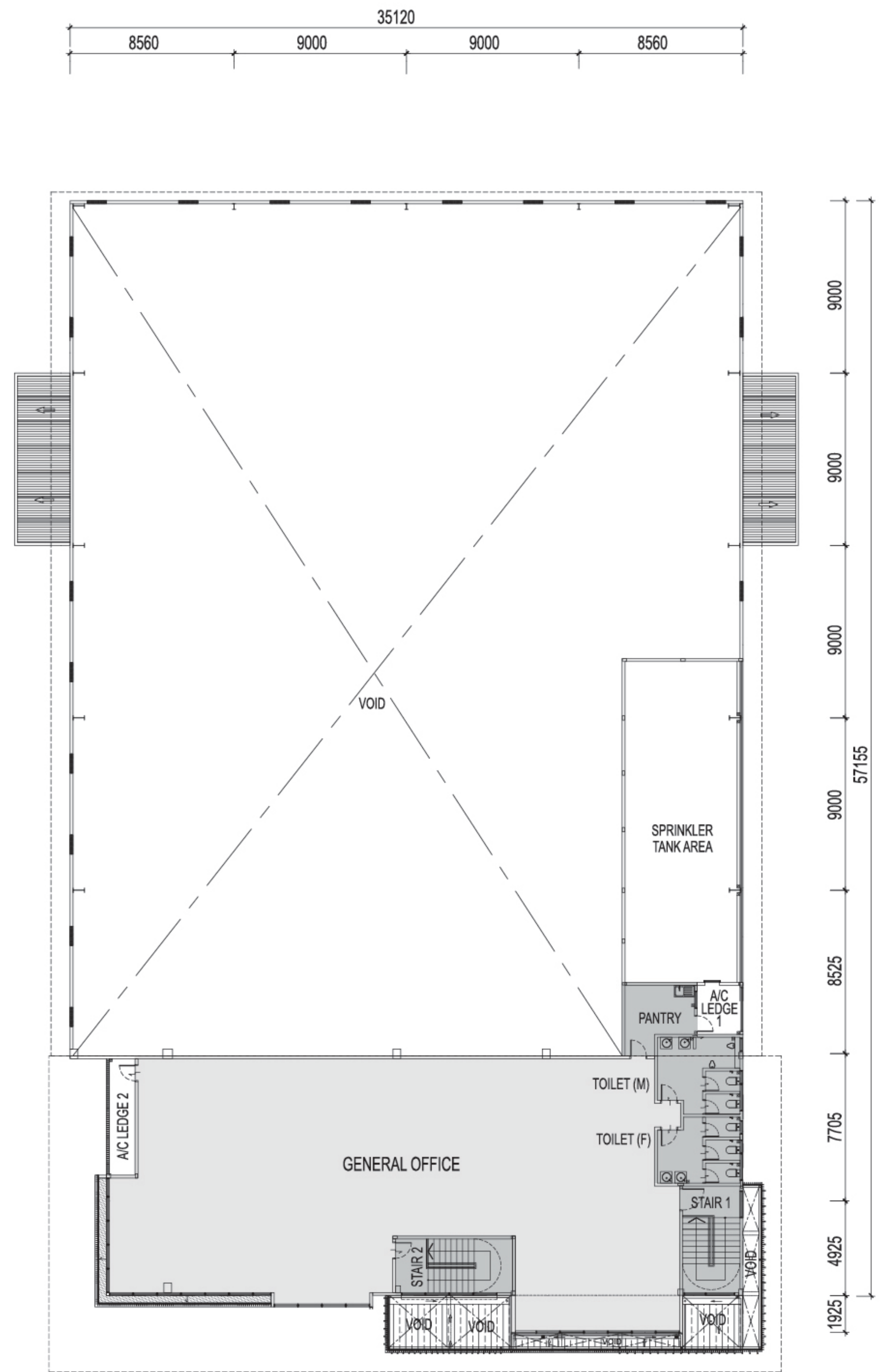
approx. 43,777.00 sq.ft. - 100,935.00 sq.ft.

Gross Floor Area :

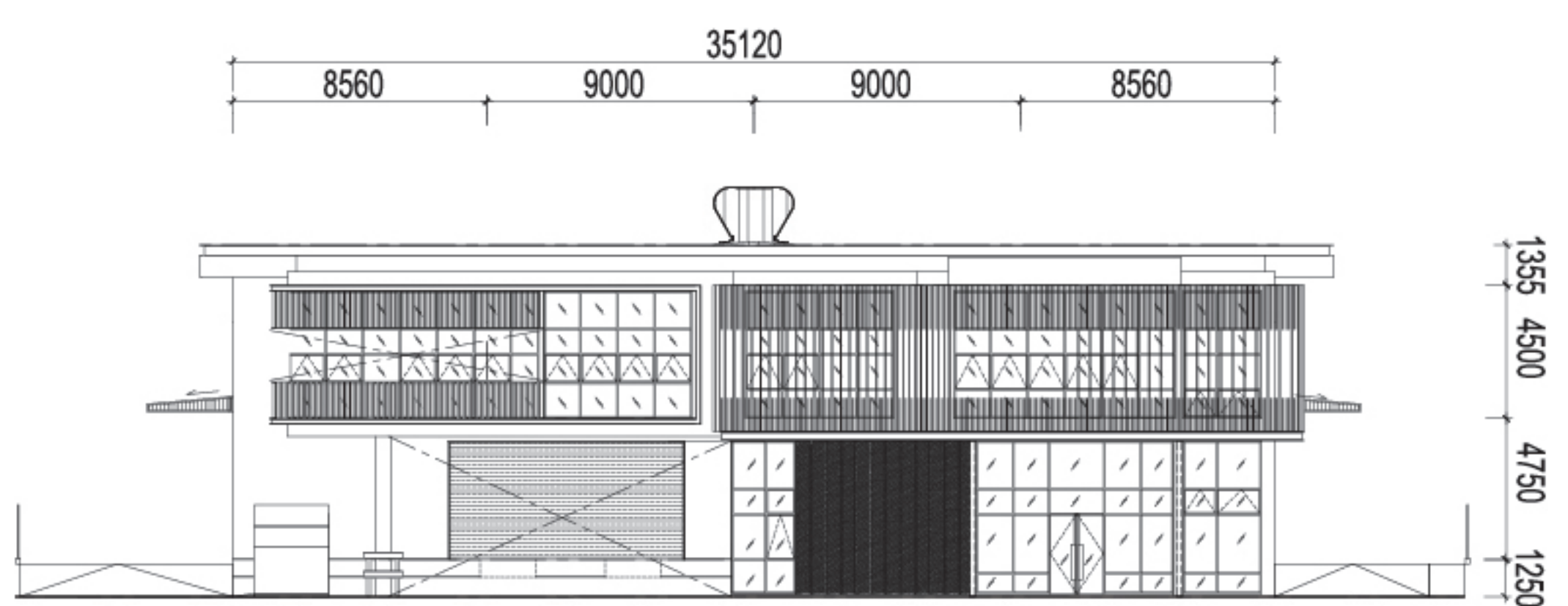
approx. 30,273.86 sq.ft. & above



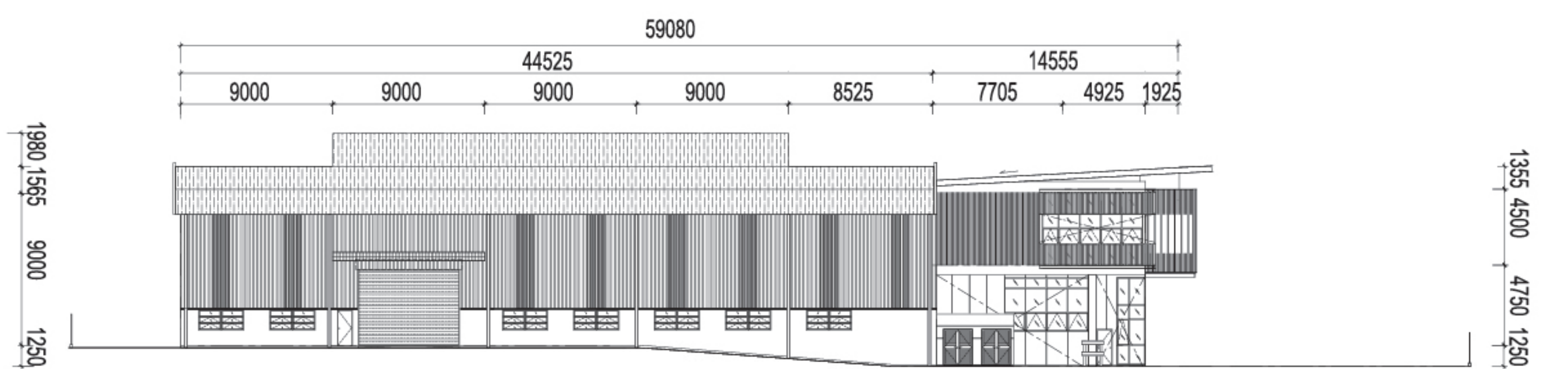
GROUND FLOOR



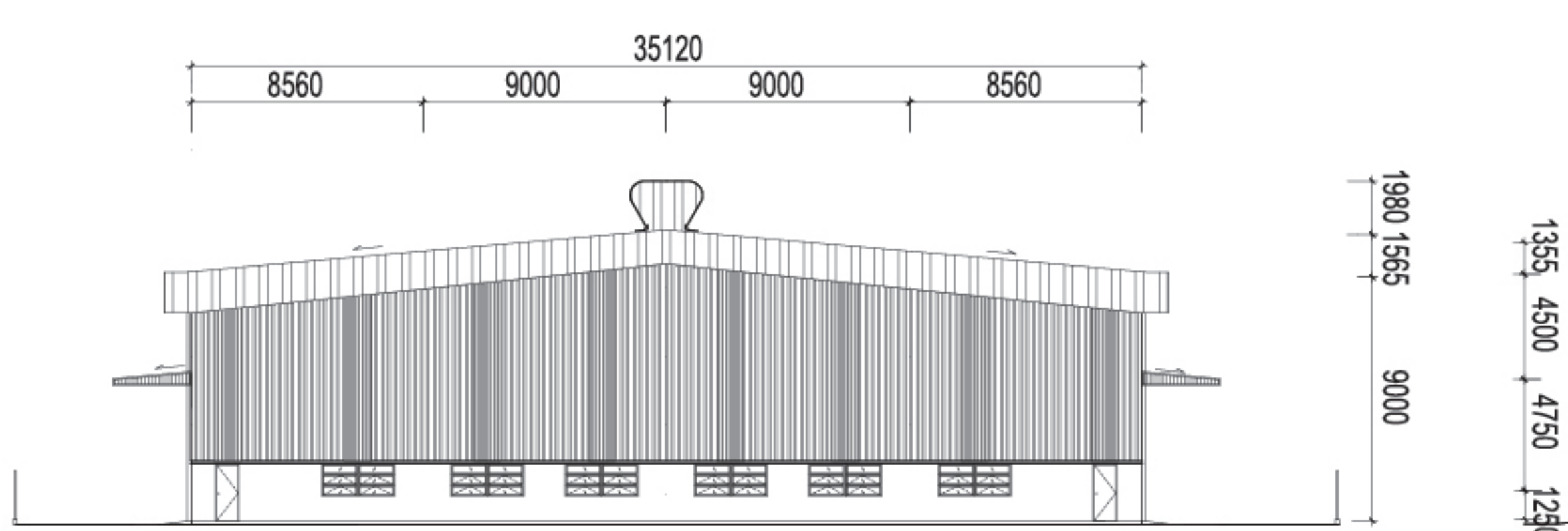
FIRST FLOOR



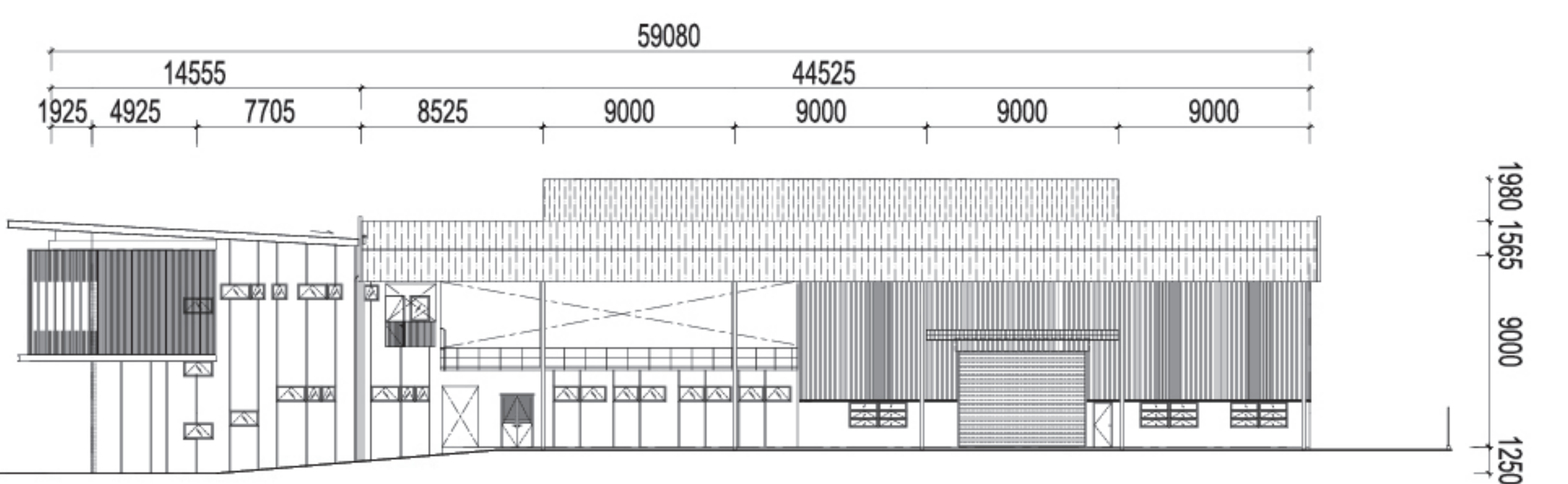
FRONT ELEVATION



LEFT ELEVATION



REAR ELEVATION



RIGHT ELEVATION

The information contained in this loose sheet is subject to change and cannot form part of an offer or contract. We reserve the right to alter, change, substitute and/or vary any information herein without prior notification. No representation or warranties (whether express or implied) is made as to the accuracy, condition and completeness of the information herein. All renderings are artist's impression only. While every reasonable care has been taken in preparing this loose sheet, the developer shall not be held responsible for any inaccuracies, loss and/or damages arising from the information herein.